

## Video inserter CI-RL4-PSAAIO

**Compatible with  
Citroen, DS, Fiat, Opel, Peugeot  
and Toyota vehicles  
with ALL-IN-ONE head unit PSA AIO  
with 10.25inch monitor**



**Video-inserter for front- and rear-view camera  
and two additional video sources**

### Product features

- Video-inserter for factory-infotainment systems
- 1 CVBS Input for rear-view camera
- 1 CVBS Input for front camera
- 2 CVBS video-inputs for after-market devices (e.g. USB-Player, DVB-T2 tuner)
- Automatic switching to rear-view camera input on engagement of the reverse gear
- Automatic front camera switching after reverse gear for 10, 15 or 20 seconds
- Display of factory PDC graphic can be shown (not available for all vehicles)
- Video-in-motion (ONLY for connected video-sources)
- Video-inputs NTSC compatible

## Contents

### 1. Prior to installation

- 1.1. Delivery contents
- 1.2. Checking the interface compatibility of vehicle and accessories
- 1.3. Connectors
  - 1.3.1. Connectors – video interface
  - 1.3.2. Connectors - daughter PCB
- 1.4. Dip-switch settings
  - 1.4.1. 8 dip – black
    - 1.4.1.1. Activating the front camera input (dip 1)
    - 1.4.1.2. Enabling the interface's video inputs (dip 2-3)
    - 1.4.1.3. Rear-view camera setting (dip 5)
    - 1.4.1.4. Factory PDC display (Dip 6-7)
  - 1.4.2. 4 dip - red

### 2. Installation

- 2.1. Place of connection
- 2.2. Connection scheme
- 2.3. Installation – daughter PCB
  - 2.3.1. Warning notes, concerning the installation of ribbon cables
  - 2.3.2. Pictures: Installation example Opel Combo E 2025
- 2.4. Connection - picture signal cable
- 2.5. Connection – 10pin Power / CAN cable
- 2.6. Analogue power supply
- 2.7. Power supply output
- 2.8. Connection – video inputs
  - 2.8.1. Audio insertion
  - 2.8.2. After-market front camera
  - 2.8.3. After-market rear-view camera
    - 2.8.3.1. Case 1: Video-interface receives the reverse gear signal
    - 2.8.3.2. Case 2: Video interface does not receive the reverse gear signal
- 2.9. Connection – external keypad

### 3. Interface operation by external keypad

### 4. Picture settings

### 5. Specifications

### 6. Frequently asked questions

## Legal Information

By law, watching moving pictures while driving is prohibited, the driver must not be distracted. We do not accept any liability for material damage or personal injury resulting, directly or indirectly, from installation or operation of this product. This product should only be used while standing or to display fixed menus or rear-view-camera video when the vehicle is moving, for example the MP3 menu for DVD upgrades.

Changes/updates of the vehicle's software can cause malfunctions of the interface. We offer free software-updates for our interfaces for one year after purchase. To receive a free update, the interface must be sent in at own cost. Labour cost for and other expenses involved with the software-updates will not be refunded.

## 1. Prior to installation

Read the manual prior to installation.

Technical knowledge is necessary for installation. The place of installation must be free of moisture and away from heat sources.

### 1.1. Delivery contents



## 1.2. Checking the compatibility of vehicle and accessories

Requirements		
Brand	Compatible vehicles	Infotainment systems
<b>Citroen/DS</b>	Berlingo4 from 03/2024, C3 4.G from 04/2024, C3 Aircross 2.G from 06/2021 bis 05/2024, C3 Aircross 3.G from 09/2023, C4 from 11/2020, C4 X from 10/2022, C5 Aircross from 10/2022, C5 X from 02/2022, DS3 Crossback from 12/2018, DS4 from 11/2021, DS7 Crossback from 03/2017 til2022, DS9 from 11/2020 til 2022, SpaceTourer Face-Lift from 2024	PSA AIO radio/nav by Bosch 10.25inch ALL-IN-ONE head-unit  <i>Not compatible with CRONY2 from Clarion!</i>
<b>Fiat</b>	Doblo3 Facelift from model year 2024, Scudo3 Facelift from model year 2024	PSA AIO radio/nav by Bosch 10.25inch ALL-IN-ONE head-unit  <i>Not compatible with CRONY2 from Clarion!</i>
<b>Opel</b>	Combo E from 11/2023, Corsa F from 07/2019, Grandland from 06/2021, Mokka B from 09/2020, Vivaro C from 09/2023	PSA AIO radio/nav by Bosch 10.25inch ALL-IN-ONE head-unit  <i>Not compatible with CRONY2 from Clarion!</i>
<b>Peugeot</b>	208 II from 06/2019, 2008 II from 11/2019 til about 04/2023 (NAC), 308 III from 09/2021, 3008 II from 05/2021 til 03/2024, 3008 III from 04/2024, 408 III from 11/2022, 508 II from 10/2018, 5008 II from 10/2020, Rifter from 03/2024, Traveller from 04/2024	PSA AIO radio/nav by Bosch 10.25inch ALL-IN-ONE head-unit  <i>Not compatible with CRONY2 from Clarion!</i>
<b>Toyota</b>	ProAce II from model year 2024, ProAce City from model year 2024, ProAce Verso from model year 2024	PSA AIO radio/nav by Bosch 10.25inch ALL-IN-ONE head-unit  <i>Not compatible with CRONY2 from Clarion!</i>

## Limitations

### *Video only*

The interface inserts ONLY video signals into the infotainment. For inserting Audio signals either the possibly existing factory audio-AUX-input or a FM-modulator can be used.

If 2 audio sources shall be connected to the infotainment, an additional electronic is necessary to switch them.

### *Inserted video picture*

To ensure a better picture quality, the inserted video picture is displayed in a reduced format on the monitor, i.e. it does not cover the entire monitor size.

### *Factory rear-view camera*

Automatically switching-back from inserted video to factory rear-view camera is only possible while the reverse gear is engaged. To delay the switch-back an additional electronic part is required.

### *After-Market front camera*

The front camera will automatically be switched for 10, 15 or 20 seconds (adjustable) after disengaging the reverse gear. A manually front camera switching is possible by external keypad

### *Factory PDC display*

The factory PDC graphic display does not work in all vehicles.

### *Video input signal*

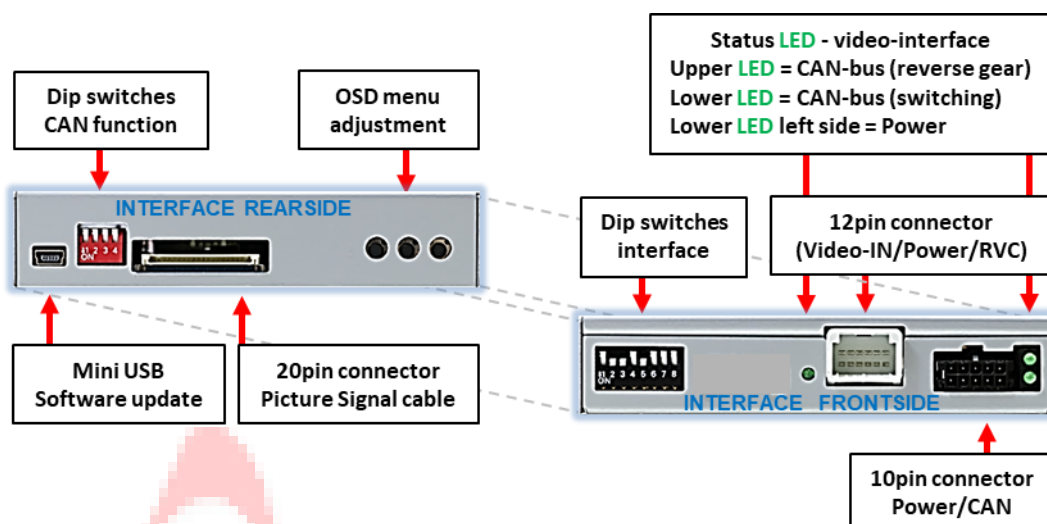
NTSC video sources compatible only.



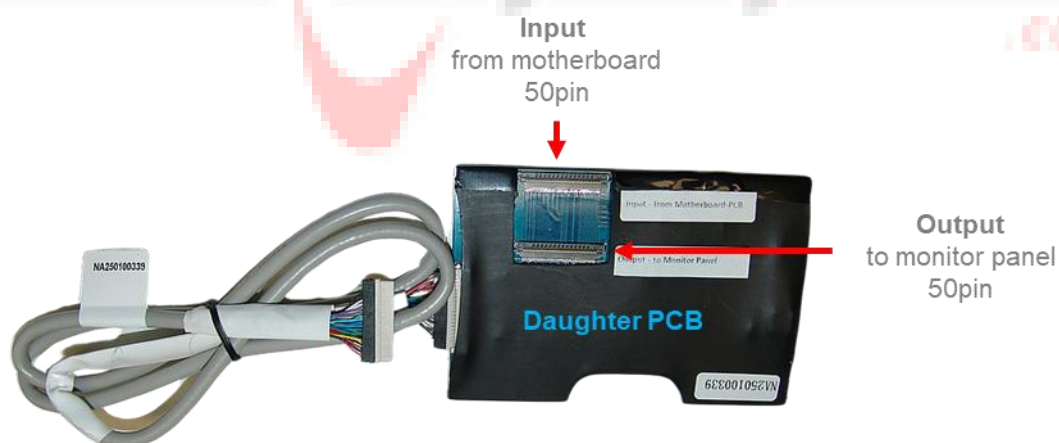
## 1.3. Connectors

### 1.3.1. Connectors - video-interface

The video-interface converts the video signals of connected after-market sources in a factory monitor compatible picture signal which is inserted in the factory monitor, by using separate trigger options.



### 1.3.2. Connectors – daughter PCB



## 1.4. Dip-switch settings

### 1.4.1. 8 dip - black

Some settings have to be selected by the dip-switches on the video interface.

Dip position down is ON and position up is OFF.



Dip	Function	ON (down)	OFF (up)
1	Front camera	enabled*	disabled
	Power supply output (red wire)	+12V (max. 3A) when reverse gear is engaged incl. 10 seconds delay and +12V by manual switching to front camera by keypad	+12V (max. 3A) ACC
2	CVBS AV1-input	enabled	disabled
3	CVBS AV2-input	enabled	disabled
4	No function		Set to OFF
5	Rear-view cam type	after-market	factory or none
6	Factory PDC display	enabled	disabled
7	PDC Ex-works position*	Right	left
8	No function		Set to OFF

\*The front camera will automatically be switched for 10, 15 or 20 seconds (depending on the setting in the OSD menu) after disengaging the reverse gear.

\* The factory PDC display must also be activated via Dip 6.

See the following chapters for detailed information.

## 1.4.1.1. Activating the front camera input (dip 1)

If set to ON, the interface switches for 10, 15 or 20 seconds (depending on the setting in the OSD menu) from the rear-view camera to the front camera input after having disengaged the reverse gear. In addition, a manual switch-over to the front camera input is possible via keypad (short press) from any image mode.

Description of the power supply output: see chapter "Power supply output".

## 1.4.1.2. Enabling the interface's video inputs (dip 2-3)

Only the enabled video inputs can be accessed when switching through the interface's video sources. It is recommended to enable only the required inputs, disabled inputs will be skipped when switching through the video-interfaces inputs.

## 1.4.1.3. Rear-view camera setting (dip 5)

If set to OFF, the interface switches to factory picture while the reverse gear is engaged to display factory rear-view camera.

If set to ON, the interface switches to its rear-view camera input „Camera-IN“ while the reverse gear is engaged.

## 1.4.1.4. Factory PDC display (dip 6-7)

When dip switch 6 is set to ON, the factory PDC graphic is displayed by the interface. Dip switch 7 sets the position of the factory PDC graphic: ON = graphic on the right, OFF = graphic on the left.

**Note:** The factory PDC graphic is not displayed in all vehicles.

**Note:** Dips 4 and 8 are out of function and have to be set to **OFF**.

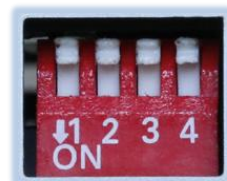
**After each Dip-switch-change a power-reset of the Video Interface has to be performed!**

## 1.4.2. 4 dip - red

By using the Dip-switches, the factory Head-unit or vehicle can be chosen which the interface will be connected to.

Dip position down is ON and position up is OFF.

Set all dip switches to off



Vehicle/Navigation	Dip 1	Dip 2	Dip 3	Dip 4
All vehicles	OFF	OFF	OFF	OFF



## 2. Installation

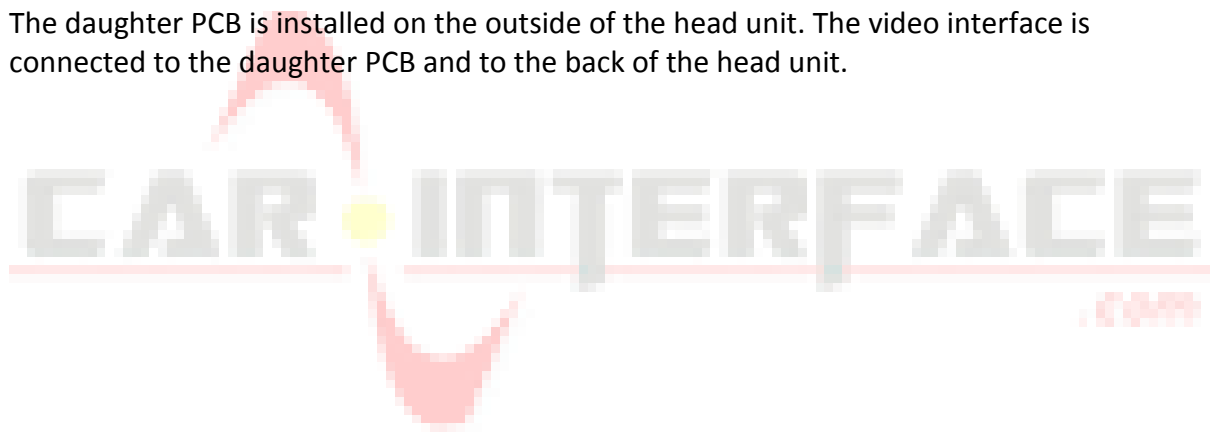
To install the interface, first switch off the ignition and disconnect the vehicle's battery. Please read the owner's manual of the car, regarding the battery's disconnection! If required, enable the car's Sleep-mode (hibernation mode)  
In case the sleep-mode does not succeed, the disconnection of the battery can be done with a resistor lead.

As with any installation of retrofit equipment, a stand-by test is necessary after the installation of the video interface, to ensure that the unit also switches off after reaching the vehicle's sleep mode.

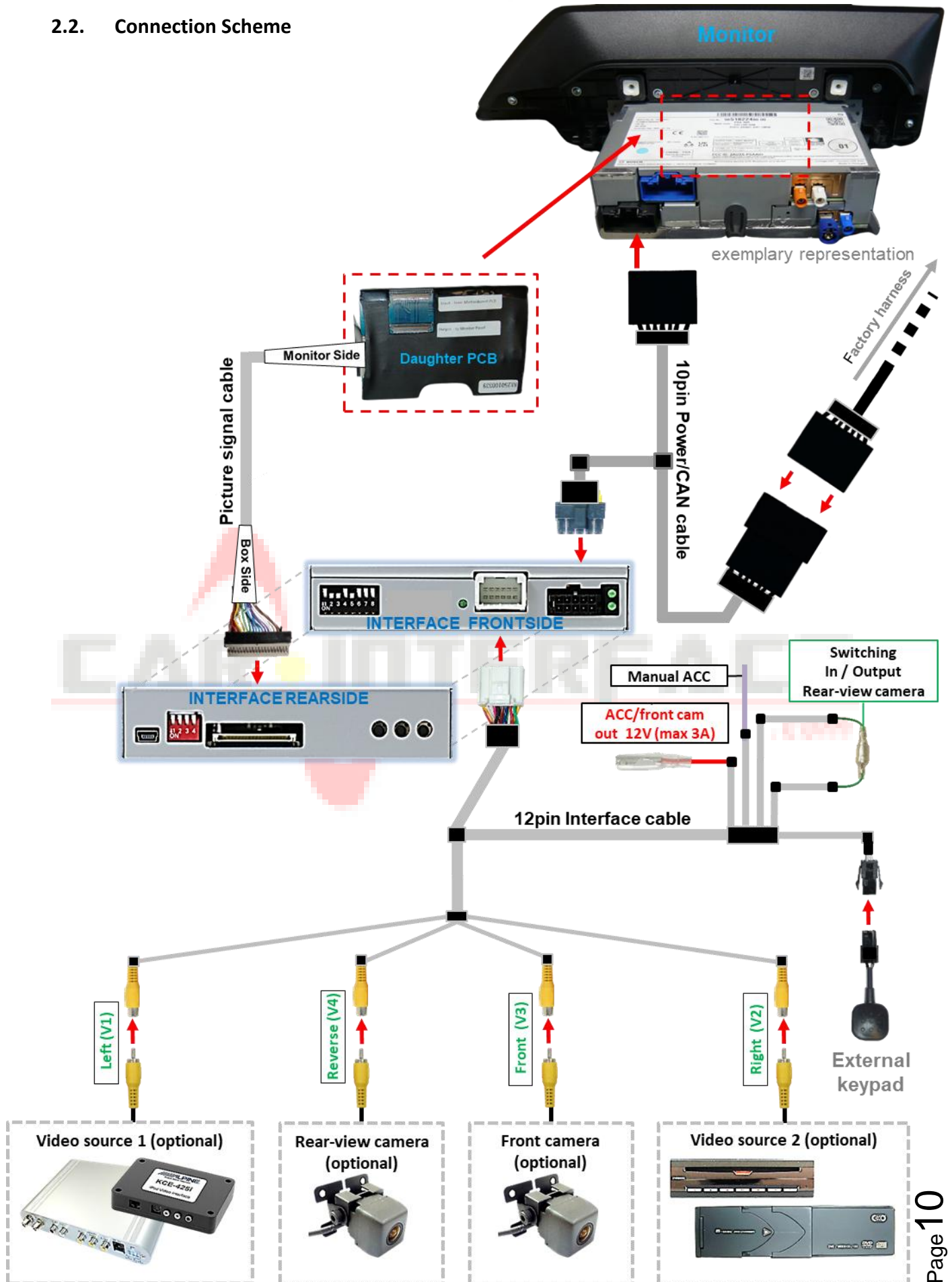
Before the final installation, we recommend a test-run of the interface. Due to changes in the production of the vehicle manufacturer, there's always the possibility of incompatibility.

### 2.1. Place of connection

The daughter PCB is installed on the outside of the head unit. The video interface is connected to the daughter PCB and to the back of the head unit.



## 2.2. Connection Scheme



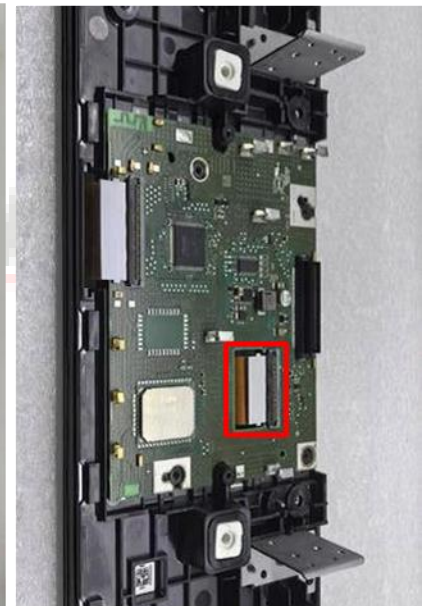
## 2.3. Installation – daughter PCB

Remove the factory head-unit. The enclosed daughter PCB has to be installed into the picture line between the monitor panel and mainboard of the head-unit.



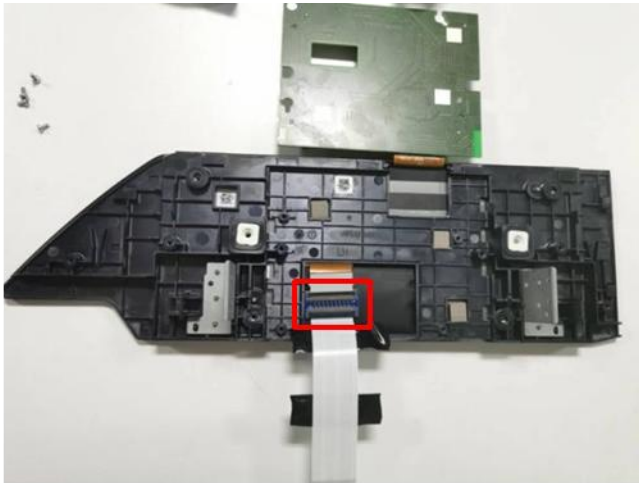
1

Remove the black plastic back cover from the all-in-one head unit step by step.



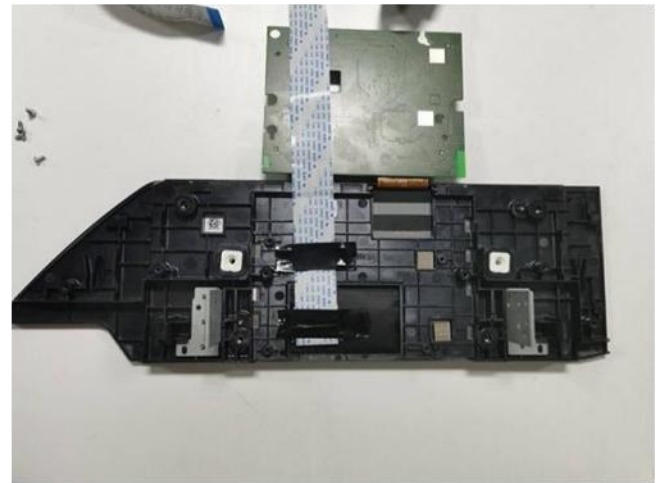
2

Remove the head unit and the metal cover on the back of the monitor step by step. Then unclip the 50-pin OEM ribbon cable coming from the monitor panel on the mainboard.



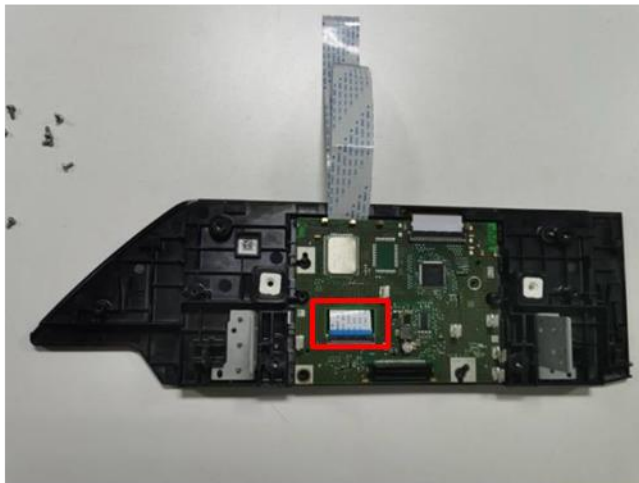
3

Remove the mainboard from the back of the monitor and carefully fold it upwards. Use the flex connector to connect the **longer** 50pin ribbon cable to the freed 50pin OEM ribbon cable of the monitor panel.



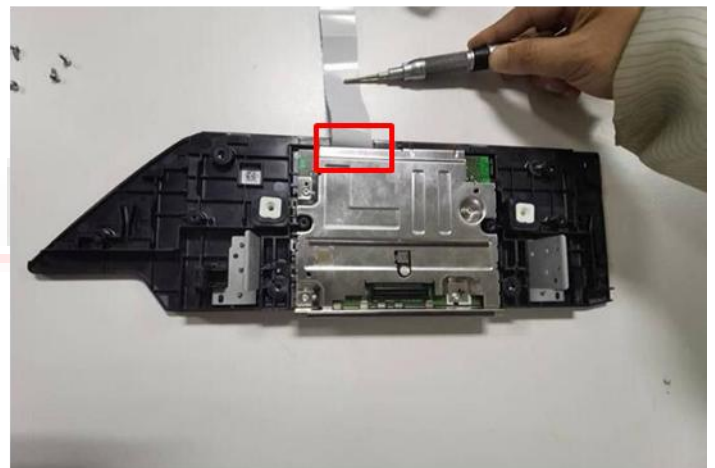
4

Route the longer ribbon cable up and out and, if necessary, attach it to the back of the monitor.



5

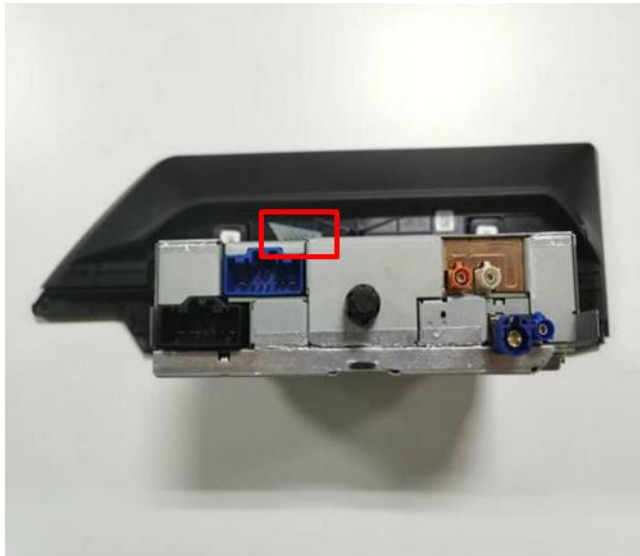
Clip the **shorter** of the two 50pin ribbon cables into the empty socket on the mainboard and thread it through the opening in the mainboard. Carefully fold back the mainboard and attach it to the back of the monitor.



6

Carefully reattach the metal cover to the back of the monitor. Be careful not to pinch the two ribbon cables.





7

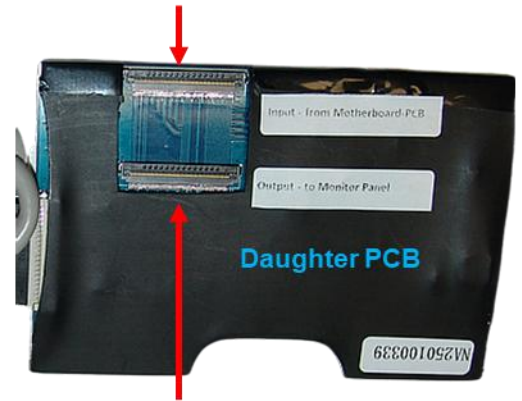
Carefully reassemble the head unit, guiding the two 50-pin ribbon cables out of the case.



9

Attach the daughter PCB to the head unit.

Input  
from the motherboard  
**shorter**  
50pin ribbon cable



Output  
to monitor panel  
**longer**  
50pin ribbon cable

8

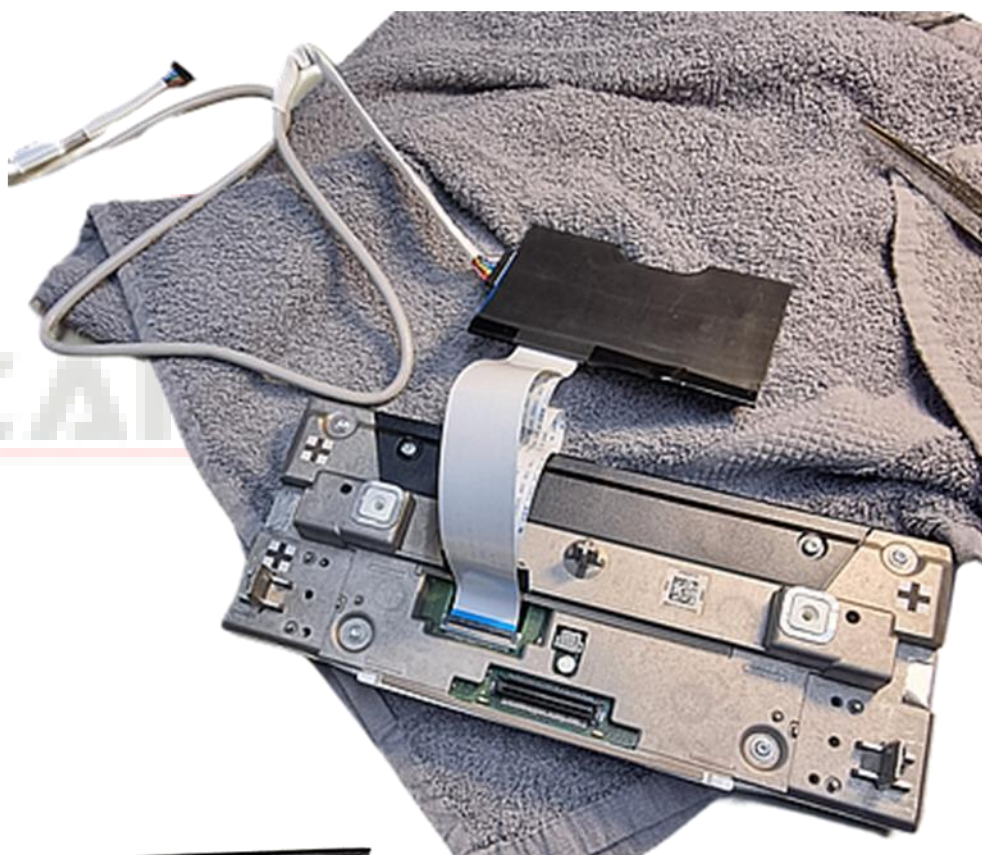
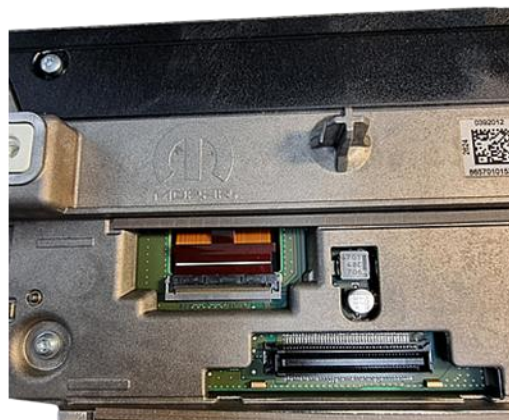
Clip the **shorter** ribbon cable coming from the motherboard into the **input** of the daughter PCB and the **longer** ribbon cable going to the monitor panel into the **output** of the daughter PCB.

## 2.3.1. Warning notes, concerning the installation of ribbon cables

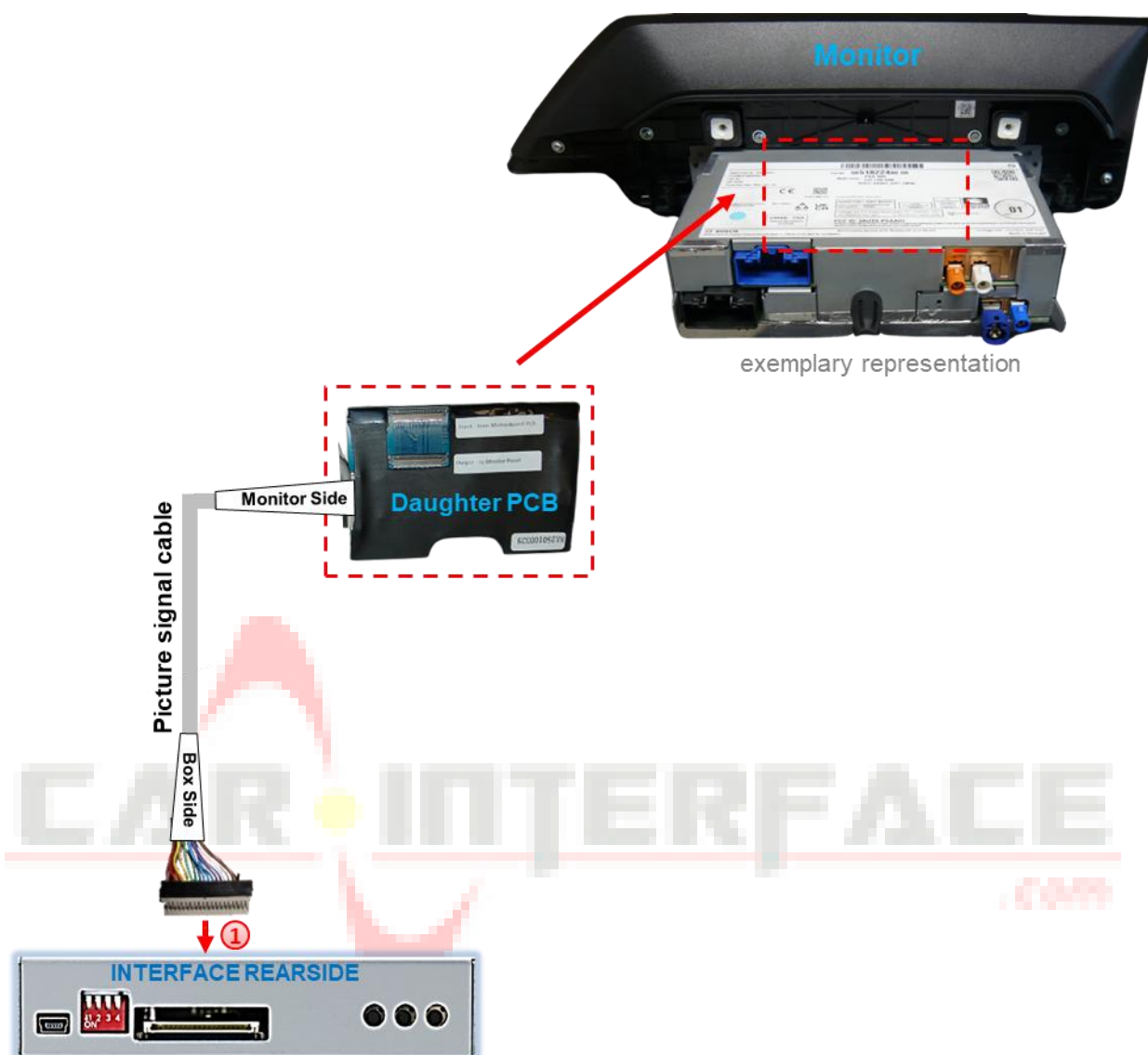
1) The ends of the ribbon cable must always be precisely clipped in at the stop on both sides, i.e. at a right angle, as even the slightest change in angle can lead to a faulty contact and short circuit.

2) The ribbon cable's contacting side always has to correspond to the contacting side of the connector, concerning the mounting position.

## 2.3.2. Pictures: Installation example Opel Combo E 2025



## 2.4. Connection – picture signal cable



- 1 Connect the female 20pin connector of the pre-connected 20pin picture signal cable to the male 20pin connector of the video interface.



## 2.5. Connection – 10pin Power/CAN cable



- ① Connect the female 10pin connector of the 10-pin Power/CAN cable to the 10pin connector of the Video Interface.
- ② Disconnect the female 12pin connectors of the vehicle harness at the rear-side of the head unit and connect it to the black male 12pin connector of the 10-pin power/CAN cable.
- ③ Connect the opposing black female 12pin connector of the 10-pin Power/CAN cable to the previously become free male 12pin connectors of the head unit.

### Check 1

*Exceptionally, the CAN communication may not succeed in all vehicles! If, after connecting the PNP harness, no interface LED lightens up while the ignition is turned on, the analog power supply needs to be done! (see following chapter)*

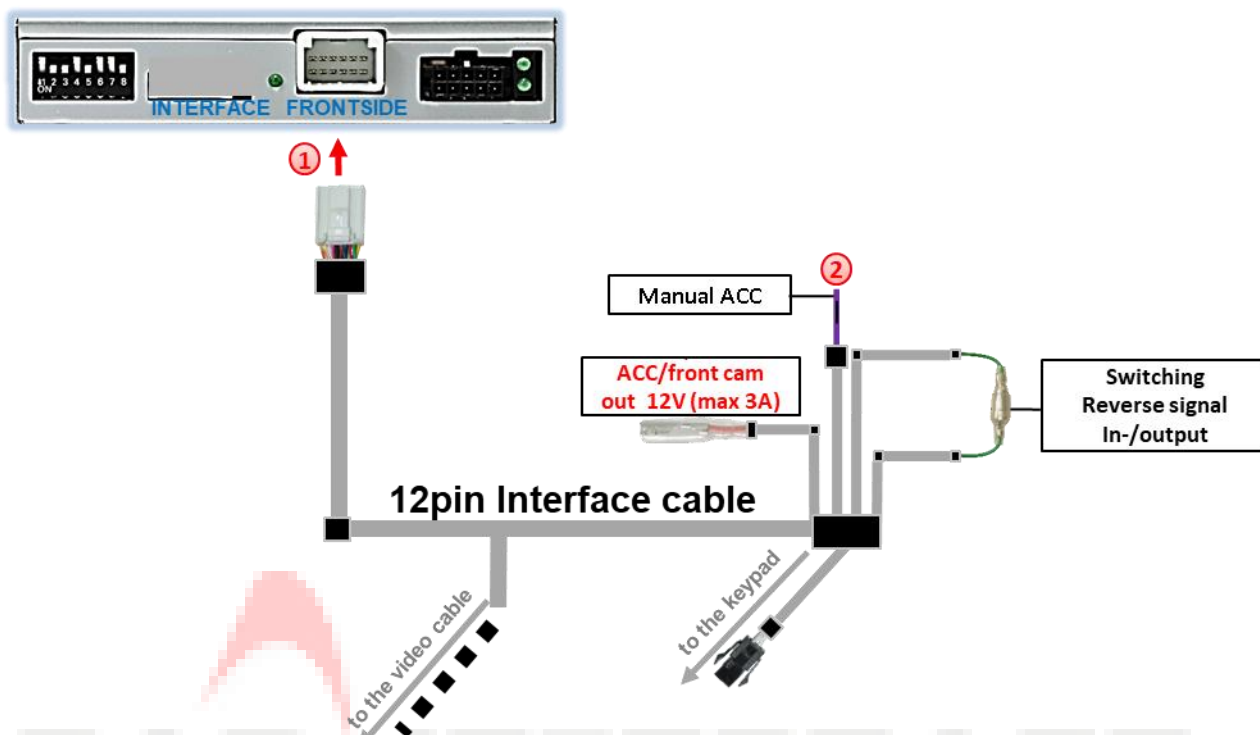
### Check 2

*Exceptionally, the power supply to the video interfaces may not be interrupted after switching to the vehicle's sleep mode. If the interface LEDs continue to shine even in the vehicle's sleep mode, separate the red wire's connection and connect the male connector to ACC or S-contact (terminal 86s)*



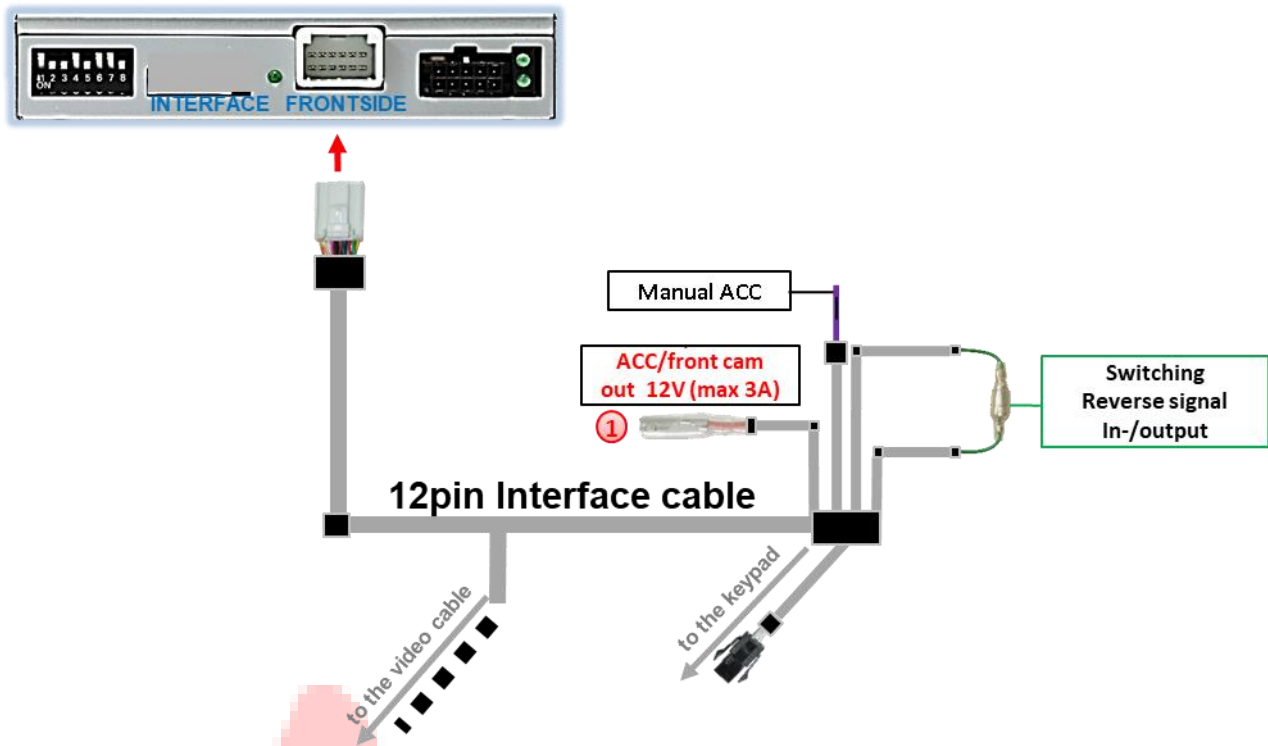
## 2.6. Analogue power supply

If no interface LED lights up after connecting the PNP cable set with the ignition switched on, the analogue power supply described below must also be carried out.



- ① Connect the female 12pin connector of the 12pin interface cable to the male 12pin connector of the video interface.
- ② Connect the 12pin interface cable's purple coloured wire **Manual ACC** to +12V **ACC terminal 15** or to +12V **S-contact terminal 86s +12V** (e.g. glove compartment illumination).

## 2.7. Power supply output



- ① The red power supply output **ACC/front cam out 12V (max 3A)** can be used to power an external source and has a different assignment depending on the position of dip switch 1 (of the black 8 dips):

Dip	Function
Dip 1 <b>ON</b>	+12V (max. 3A) when reverse gear is engaged incl. 10, 15 or 20 seconds (depending on the setting in the OSD menu) delay after reverse gear is disengaged and +12V by manual switching to front camera by keypad (short press)
Dip 1 <b>OFF</b>	+12V (max. 3A) ACC

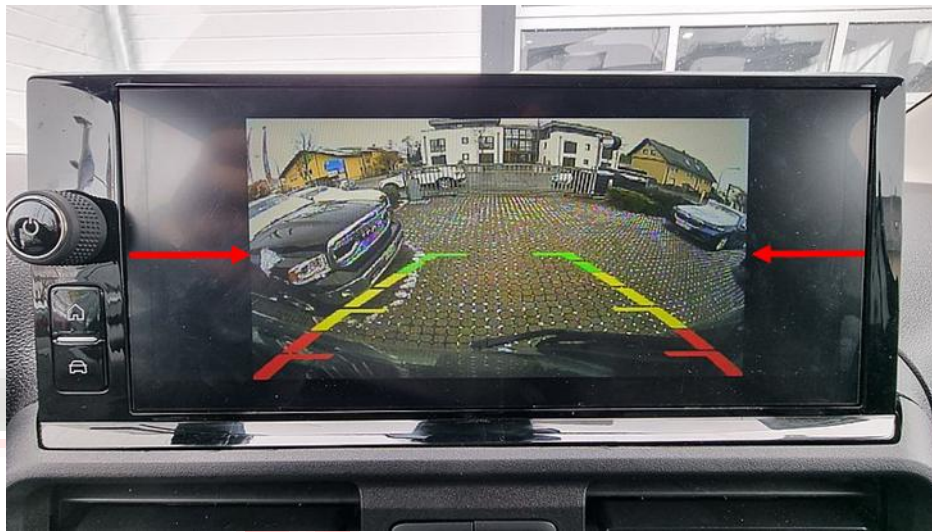
## 2.8. Connecting Video sources

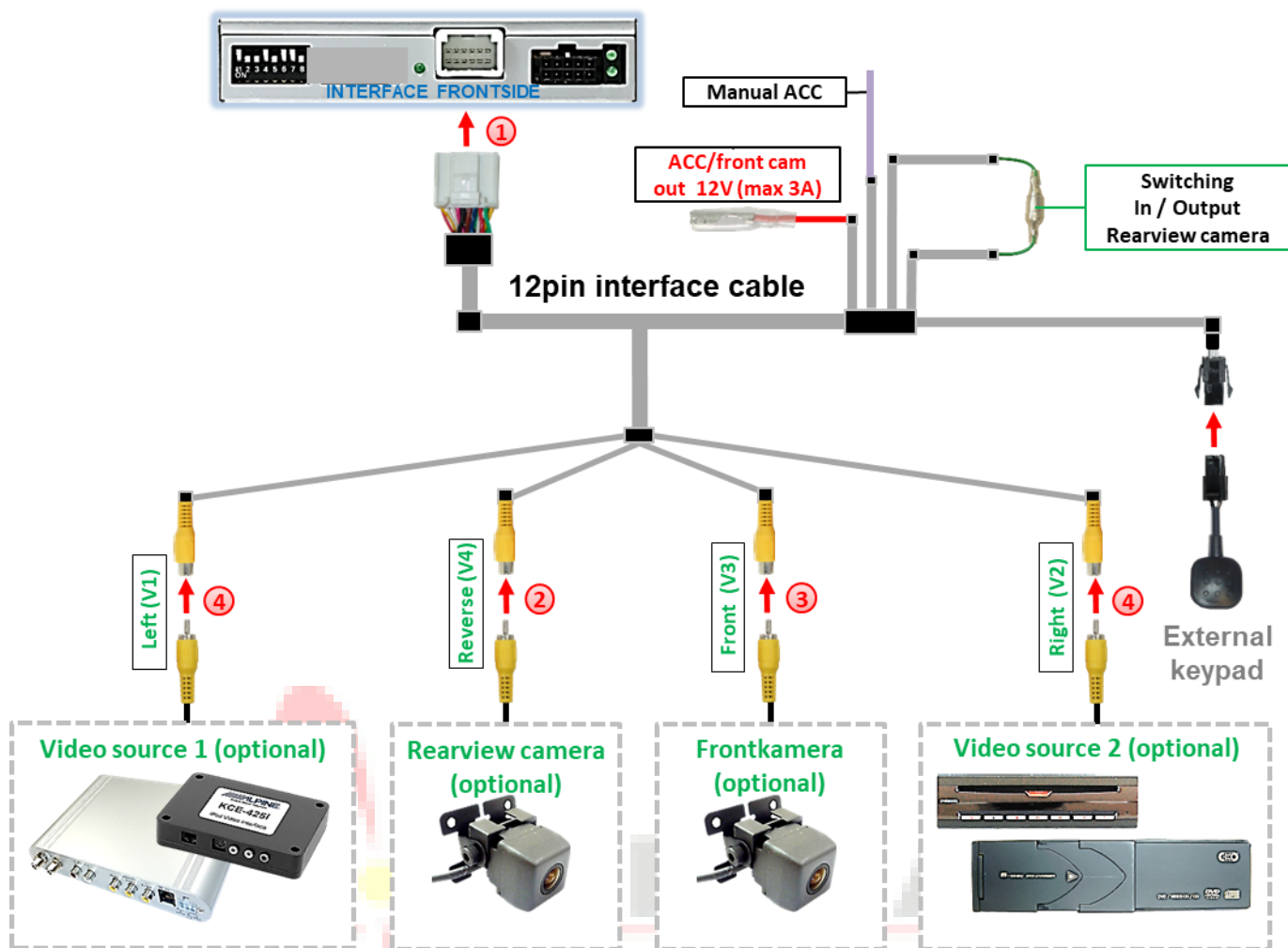
It is possible to connect an after-market rear-view camera, an after-market front camera and two more video sources to the video-interface.

**Before the final installation, we recommend a test-run to detect a incompatibility of vehicle and interface. Due to changes in the production of the vehicle manufacturer there's always a possibility of incompatibility.**



**Limitations:** To ensure a better image quality, the video image (front and rear-view camera, video 1 and video 2) is displayed in a reduced format on the monitor, i.e. it does not cover the entire monitor size.



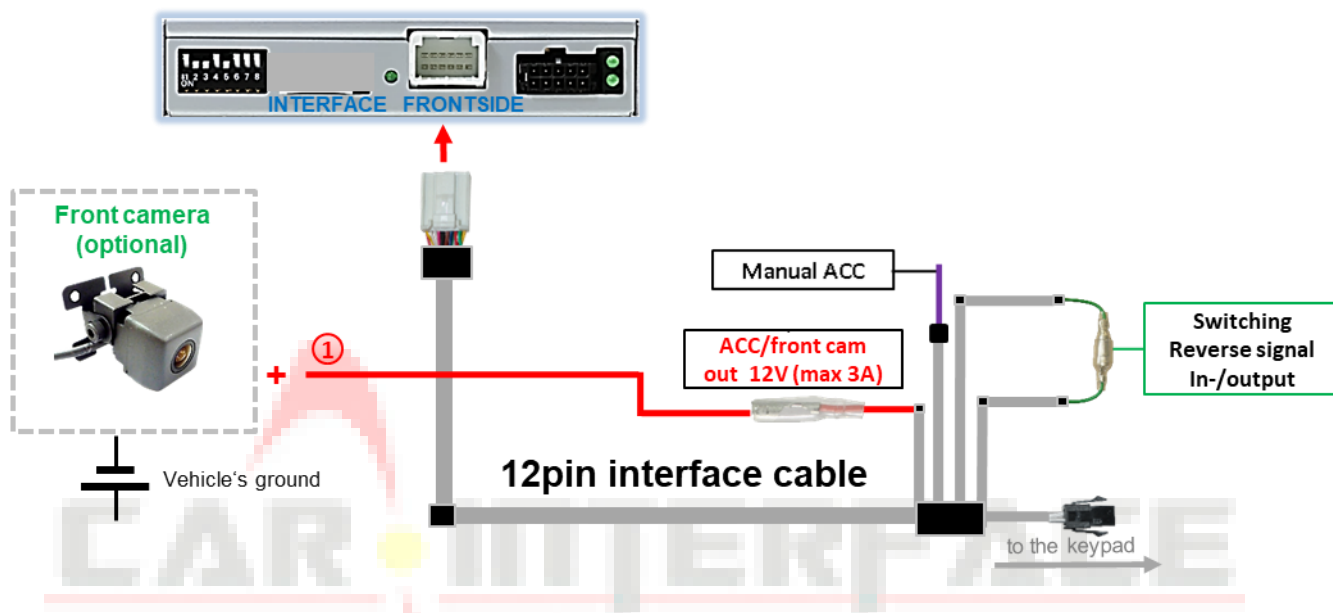


- 1 Connect the 12pin interface cable's female 12pin connector to the male 12pin connector of the video-interface.
- 2 Connect the video RCA of the Rear-view camera to the 12pin interface cable's female RCA connector „Reverse V4“.
- 3 Connect the front camera's video RCA connector to the 12pin interface cable's female RCA connector „Front V3“.
- 4 Connect the video RCA of the AV source 1 and 2 to the 12pin interface cable's female RCA connector “Left (V1)” and “Right (V2)”.

## 2.8.1. Audio-insertion

This interface is only able to insert video signals into the factory infotainment. If an AV-source is connected, the audio insertion has to be done by the factory audio AUX input or an FM-modulator. The inserted video-signal can be activated simultaneously to each audio-mode of the factory infotainment. If two AV sources shall be connected to the infotainment, additional electronic is necessary to switch the audio signals.

## 2.8.2. After-market front camera



- ① The red power supply output **ACC/front cam out 12V (max 3A)** can be used to power a front camera. If Dip 1 is set to ON (black 8 dips), the power supply output gives +12V (max 3A) when reverse gear is engaged incl. 10, 15 or 20 seconds (depending on the setting in the OSD menu) delay after reverse gear is disengaged.

**Note:** In addition, a manual switch-over to the front camera input is possible via keypad (short press) from any image mode. The power supply output gives +12V then, as well (if Dip 1 is set to ON and the front camera input is selected).

Attention: A long press of the external keypad push button will switch the interface to the next source.

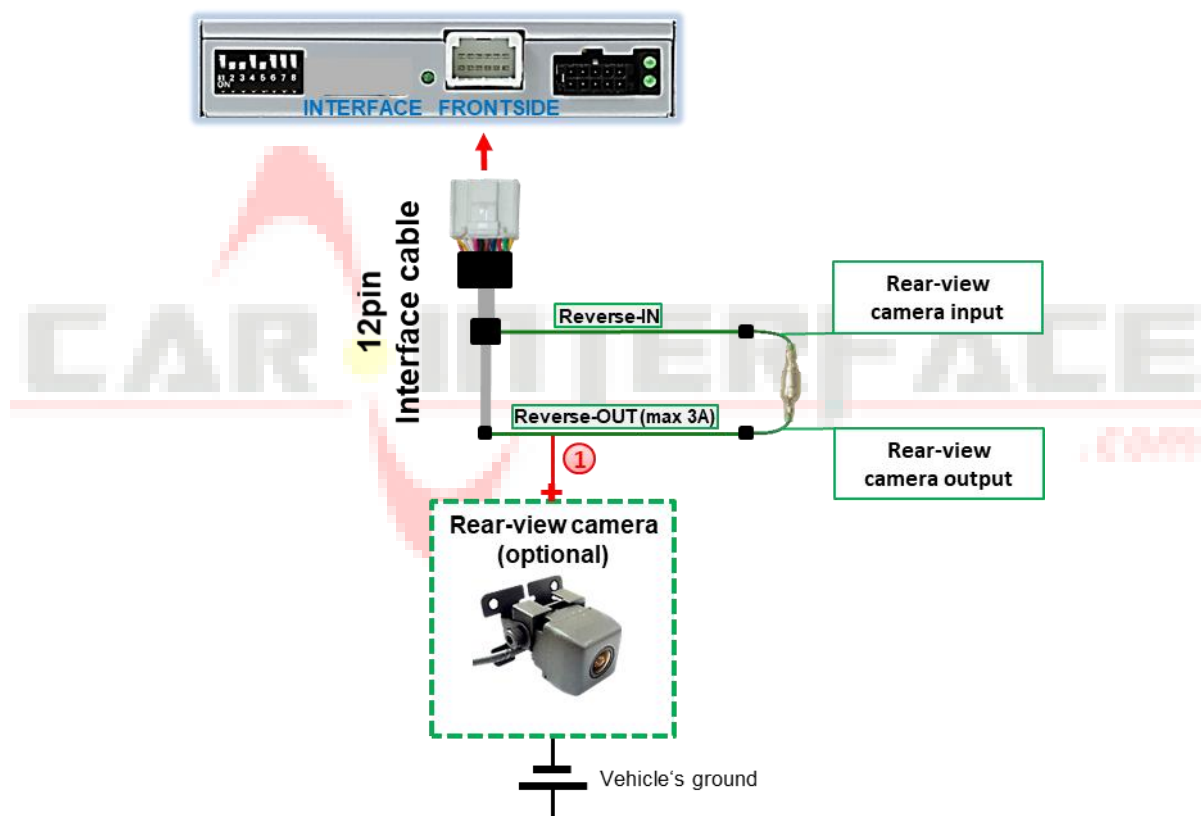
## 2.8.3. After-market rear-view camera

Some vehicles have a different reverse gear code on the CAN-bus which the video-interface is not compatible with. Therefore, there are two different ways of installation. If the video interface receives a signal of the reverse gear, the green wire “**Reverse-OUT**” of the 20pin cable should carry +12V while the reverse gear is engaged.

**Note:** Do not forget to set dip5 of the video-interface to **ON** before testing.

### 2.8.3.1. Case 1: Video interface receives the reverse gear signal

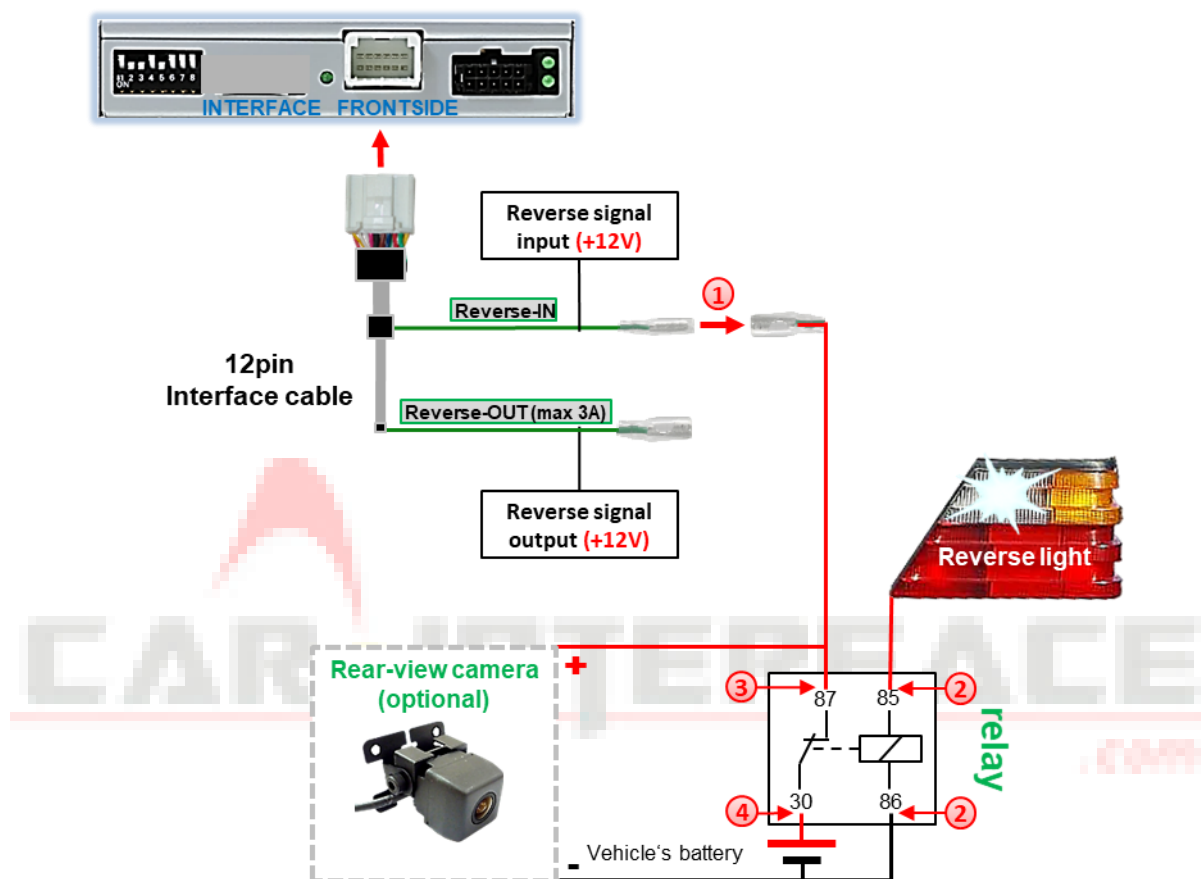
If the CAN-bus interface receives +12V on the green wire of the 20pin cable when reverse gear is engaged, it will automatically be switched to the rear-view camera input “Camera IN” while reverse gear is engaged.



- ① The 12 V power supply for the rear-view camera (max 3A) has to be taken from the green wire of the 20pin cable to avoid an unnecessary, permanent power supply to the camera electronic.  
For the operation, both green cables “Reverse IN” and “Reverse OUT” have to remain onnected.

## 2.8.3.2. Case 2: Video interface does not receive the reverse gear signal

If the video interface does not receive +12V on the green wire of the 20pin cable when reverse gear is engaged (not all vehicles are compatible), an external switching signal from the reverse gear light is required. As the reverse gear light's power supply isn't voltage-stable all the time, an ordinary open relay (e.g. AC-RW-1230 with wiring AC-RS5) or filter (e.g. AC-PNF-RVC) is required. The diagram below shows the connection type of the relay.

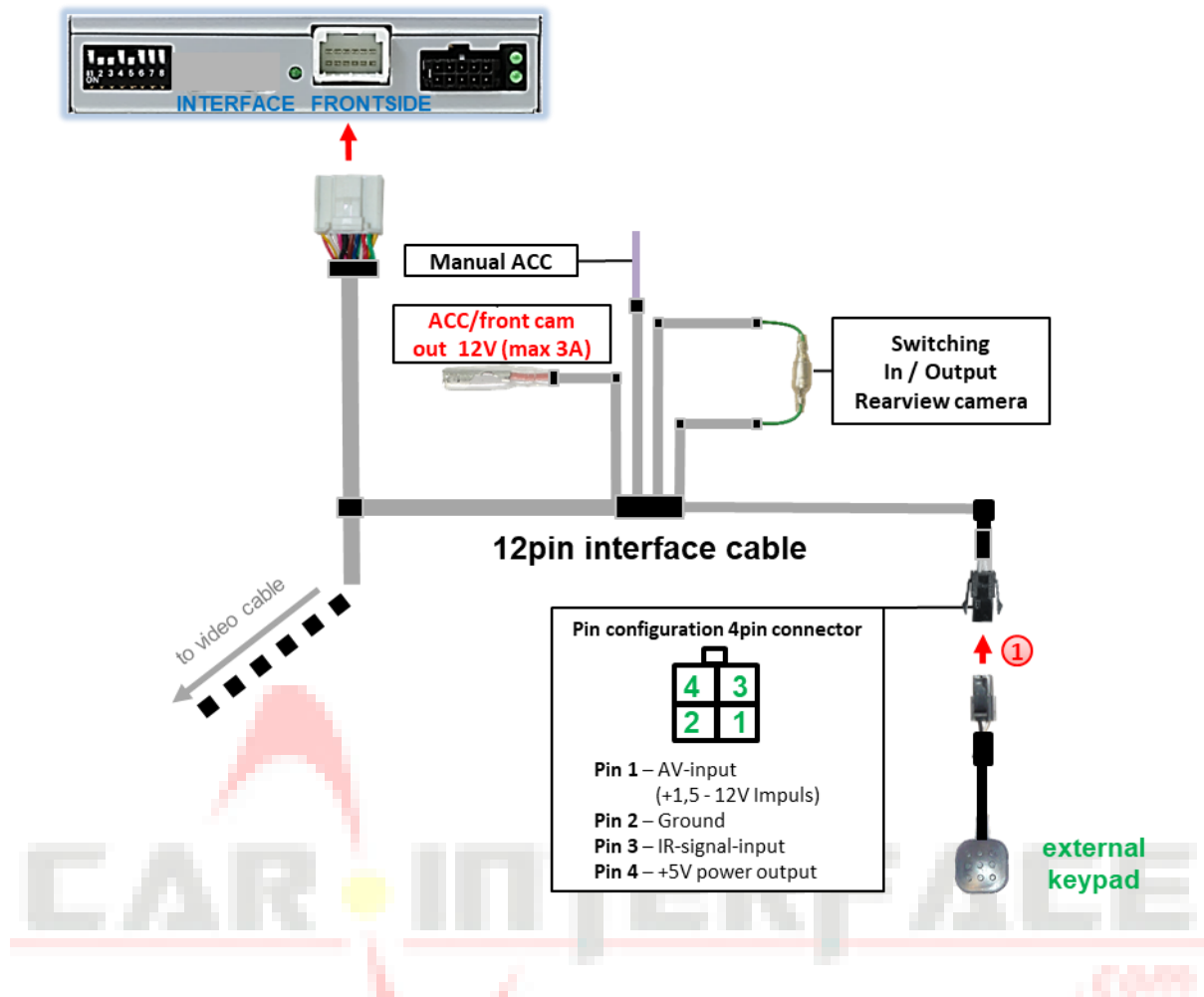


- ① Disconnect the green cable's pre-connected male- and female connectors of the 20pin cable and connect the green input cable "Reverse-IN" to the output connector (87) of the relay.

**Note:** Not least to avoid short circuits, the best solution should be, to crimp a male 4mm connector to the relay's output cable and connect it to the green cable's female 4mm connector. The output-cable "Reverse-OUT" remains disconnected as it's out of function.

- ② Connect the Reverse light's power-cable to coil (85) and the vehicle's ground to coil (86) of the relay.
- ③ Connect the output connector (87) of the relay to the rear-view camera's power-cable, like you did it to the green "Reverse-IN" cable before.
- ④ Connect permanent power / 12V to the relay's input connector (30).

## 2.9. Connection - external keypad



- ① Connect the keypad's female 4pin connector to the 12pin interface cable's male 4pin connector.

**Note:** Even if the switching through several video sources by the keypad mightn't be required, the keypad's invisible connection and availability is strongly recommended.



### 3. Interface operation by external keypad

The interface's external keypad can be used to switch the enabled inputs.

➤ Long press of keypad (2-3 seconds)

By long pressing the external keypad (2-3 seconds), the video interfaces switches the input from the factory video to the inserted video sources.

Each press (approx. 2 sec) will switch to the next enabled input. If all inputs are enabled the order is:

*Factory video → video IN1 → video IN2 → factory video →...*

Disabled inputs will be skipped.

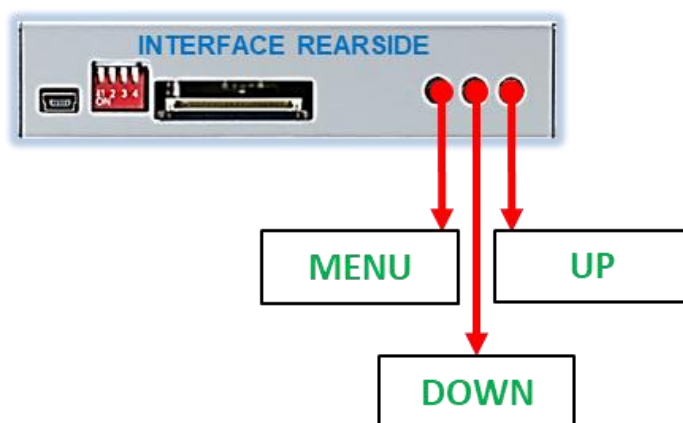
**Note:** The interface switches after releasing the switch (after long pressure).

➤ Short press of keypad (only if DIP 1 is set to ON)

By short pressing the external keypad, the video interfaces switches from the factory video to the front camera input and back to factory video.



## 4. Picture settings



The picture settings are adjustable by the 3 push-buttons of the daughter PCB's menu keypad. Press the 1. button to open the OSD settings menu or to switch to the next menu item. By pressing the other both push buttons the selected value will be changed. To avoid accidental changes during or after the installation, we recommend to disconnect the keypad from the pushbutton cable after the adjustments are done. Adjustments have to be done, while the selected input is visible on the monitor.

**Note:** The OSD menu is only shown when a working video source is connected to the selected video-input of the interface.

The following settings are available:

Contrast  
 Brightness  
 Saturation  
 Position H (horizontal picture position)  
 Position V (vertical picture position)  
 FRONT-CNTRL (front camera switch back, duration adjustable for 10, 15 or 20 seconds - 10 seconds is preset)

Contrast	50
Brightness	50
Saturation	62
Position-H	50
Position-V	20
Front-CNTRL	10SEC

**Note:** To adjust the reverse picture settings, engage the reverse gear.

## 5. Specifications

BATT/ACC range	7V - 25V
Stand-by power drain	5mA
Power	115mA @12V
Video input	0.7V - 1V
Video input formats	NTSC
Temperature range	-40°C to +85°C
Dimensions interface box	116 x 25 x 89mm (W x H x D)
Dimensions daughter PCB	130 x 8 x 81mm (W x H x D)



## 6. FAQ – Trouble shooting Interface functions

For any troubles which may occur, check the following table for a solution before requesting support from your vendor.

Symptom	Reason	Possible solution
No picture/black picture (factory picture).	Not all connectors have been reconnected to factory head-unit or monitor after installation.	Connect missing connectors.
	No power on CAN-bus box (all LED CAN-bus box are off).	Check power supply of CAN-bus box. Check CAN-bus connection of CAN-bus box.
	CAN-bus box connected to CAN-bus in wrong place.	Refer to the manual where to connected to the CAN-bus. If not mentioned, try another place to connect to the CAN-bus.
	No power on video-interface (all LED video-interface are off).	Check whether CAN-bus box delivers +12V ACC on red wire output of 8pin to 6pin cable. If not cut wire and supply ACC +12V directly to video-interface.
No picture/black picture/white picture (inserted picture) but factory picture is OK.	No picture from video source.	Check on other monitor whether video source is OK.
	No video-source connected to the selected interface input.	Check settings dips 1 to 3 of video interface which inputs are activated and switch to corresponding input(s).
	LVDS cables plugged in wrong place.	Double-check whether order of LVDS cables is exactly connected according to manual. Plugging into head-unit does not work when the manual says to plug into monitor and vice versa.
Inserted picture totally wrong size or position.	Wrong monitor settings of video-interface.	Try different combinations of dips 7 and 8 of video-interface. Unplug 6pin power after each change.
Inserted picture double or 4 times on monitor.		
Inserted picture distorted, flickering or running vertically.	Video sources output set to AUTO or MULTI which causes a conflict with the interfaces auto detection.	Set video source output fixed to PAL or NTSC. It is best to set all video sources to the same standard.
	If error occurs only after source switching: Connected sources are not set to the same TV standard.	Set all video sources to the same standard.
	Some interfaces can only handle NTSC input.	Check manual whether there is a limitation to NTSC mentioned. If yes, set source fixed to NTSC output.
Inserted picture b/w.	Picture settings have not been adjusted.	Use the 3 buttons and the interface's OSD to adjust the picture settings for the corresponding video input.
Inserted picture qual. bad.		
Inserted picture size slightly wrong.		
Inserted picture position wrong.		
Camera input picture flickers.	Camera is being tested under fluorescent light which shines directly into the camera.	Test camera under natural light outside the garage.
Camera input picture is bluish.	Protection sticker not removed from camera lens.	Remove protection sticker from lens.

Symptom	Reason	Possible solution
Camera input picture black.	Camera power taken directly from reverse gear lamp.	Use relay or electronics to "clean" reverse gear lamp power. Alternatively, if CAN-bus box is compatible with the vehicle, camera power can be taken from green wire of 6pin to 8pin cable.
Camera input picture has distortion.		
Camera input picture settings cannot be adjusted.	Camera input picture settings can only be adjusted in AV2 mode.	Set dip 3 of video-interface to ON (if not input AV2 is not already activated) and connect the camera to AV2. Switch to AV2 and adjust settings. Reconnect camera to camera input and deactivate AV2 if not used for other source.
Graphics of a car in camera input picture.	Function PDC is ON in the interface OSD.	In compatible vehicles, the graphics will display the factory PDC distance. If not working or not wanted, set interface OSD menu item UI-CNTRL to ALLOFF.
Chinese signs in camera input picture	Function RET or ALL is ON (function for Asian market) in the interface OSD.	Set interface OSD menu item UI-CNTRL to ALLOFF or PDCON.
Not possible to switch video sources by OEM button.	CAN-bus interface does not support this function for vehicle.	Use external keypad or cut white wire of 6pin to 8pin cable and apply +12V impulses for AV-switching.
Not possible to switch video sources by external keypad.	Pressed too short.	For video source switching a longer press of about 2.5 seconds is required.
	SW-version of interface does not support external keypad.	Use OEM-button or cut white wire of 6pin to 8pin cable and apply +12V impulses for AV-switching.
Interface does not switch to camera input when reverse gear is engaged.	CAN-bus interface does not support this function for the vehicles.	Cut the green wire of the 6pin to 8pin cable and apply +12V constant from reverse gear-lamp signal. Use relay to "clean" R-gear lamp power.
Interface switches video-sources by itself.	CAN-bus interface compatibility to vehicle is limited.	Cut the grey wire of 6pin to 8pin and isolate both ends. If problem still occurs, additionally cut the white wire of 6pin to 8pin cable and isolate both ends.



Made in China