

Before installing this navigation products, please be sure to read this manual and keep it for future reference.

Warning

Before head unit removing, make sure ACC power is off.

Suggestion

- Strongly recommended that you entrust professionals for product installation and maintenance!
- Recommended to be good protection for the steering wheel and the main co-pilot before installing, , keep removed panel well, in order to avoid scratches.



Components :

GPS Antenna



HDMI



DVI-I



Edge T-harnesses



USB+AUX



Screws



Interface Module



Connection unit



VHB Tape



Installation Tools :



Screw driver components

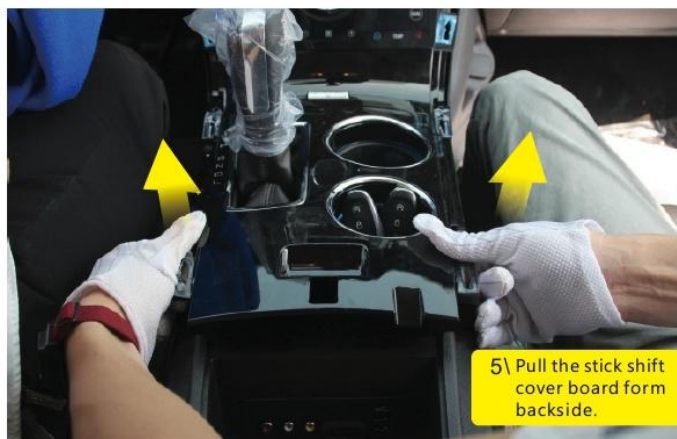


Pry Tool



Towel





5\ Pull the stick shift cover board from backside.



7\ Remove 6 screws from the plastic frame around the monitor.



6\ Remove the stick shift cover board.



8\ Take out the monitor plastic frame.

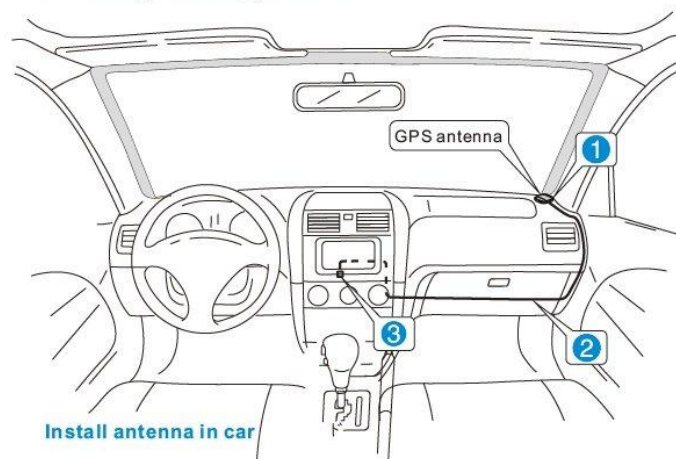


9\ Unplug all cables from monitor plastic frame.



10\ Remove 4 screws from both side of monitor, unplug all cables from monitor.

Wiring diagram



GPS antenna installation

1. Clean adhesion area with oil-soluble detergent, and fix GPS antenna with adhesive tape tight.
2. Remove the right cover of storage box, thread the cable from storage box to center console and tie up with OEM cable together.
3. Plug GPS antenna in head unit.

⚠ Notice:

Make sure all equipments are installed in secure place. If installed other automotive equipments, please be sure they are not interfering each other. Read all instructions before installation, and be recommended to install this unit by audio professional vendors.

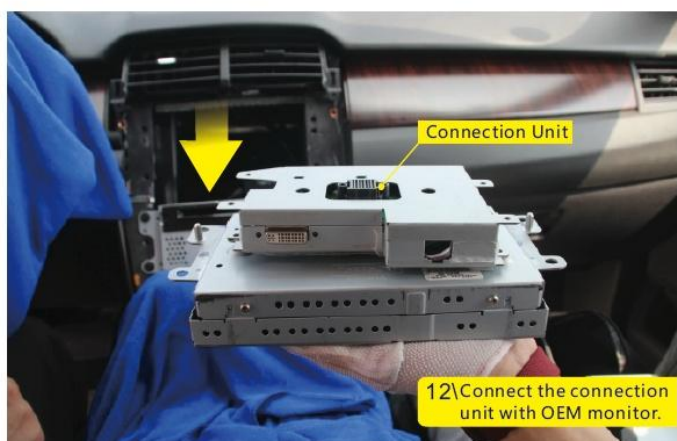
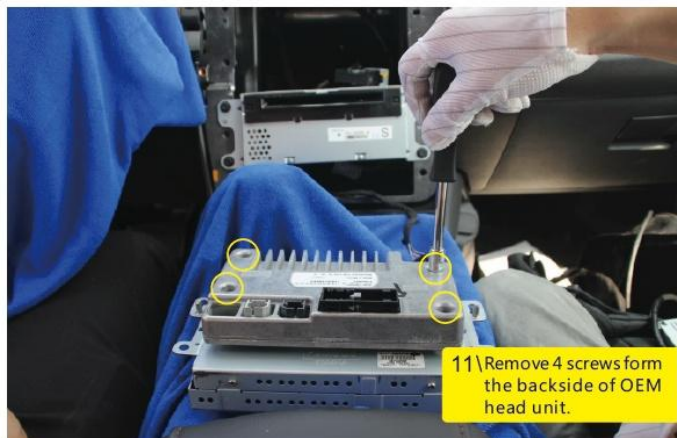
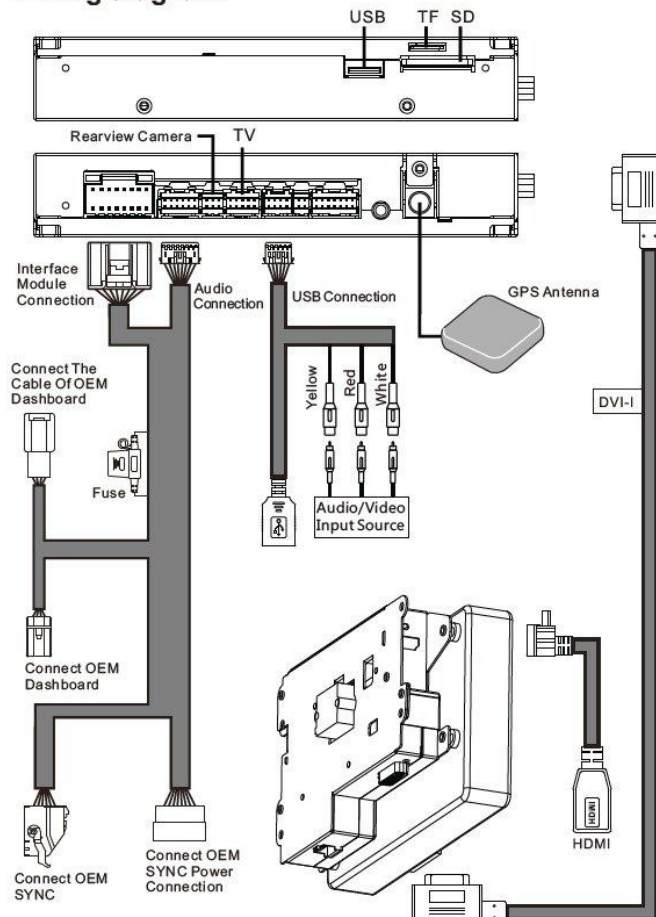
Unit installation requirements

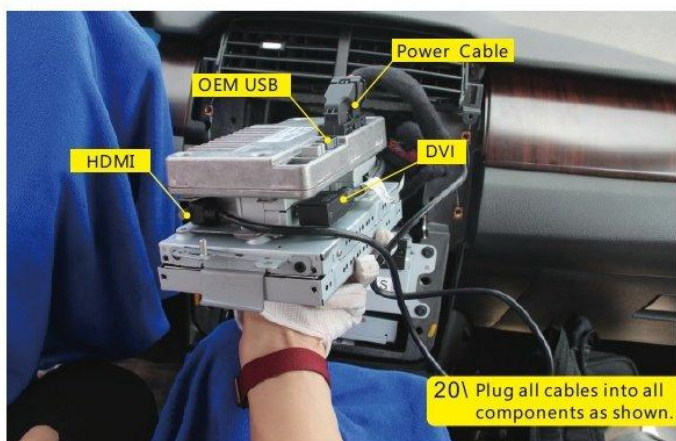
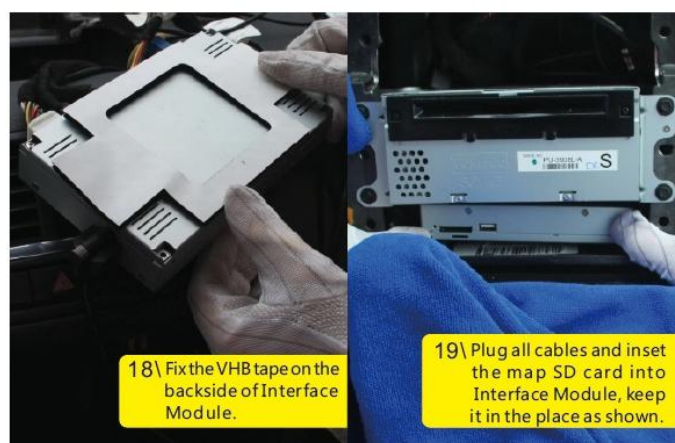
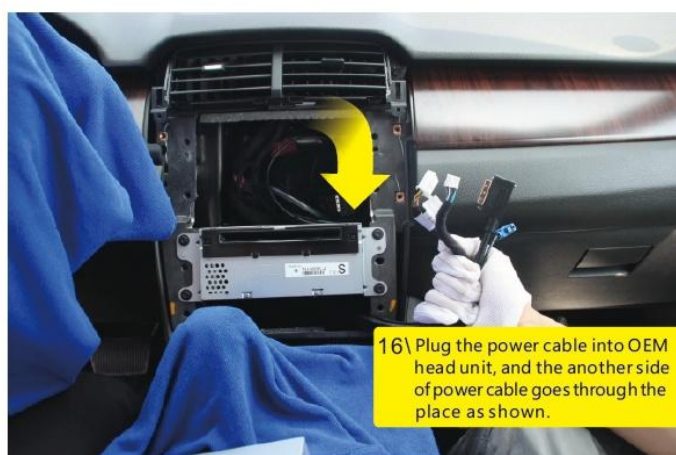
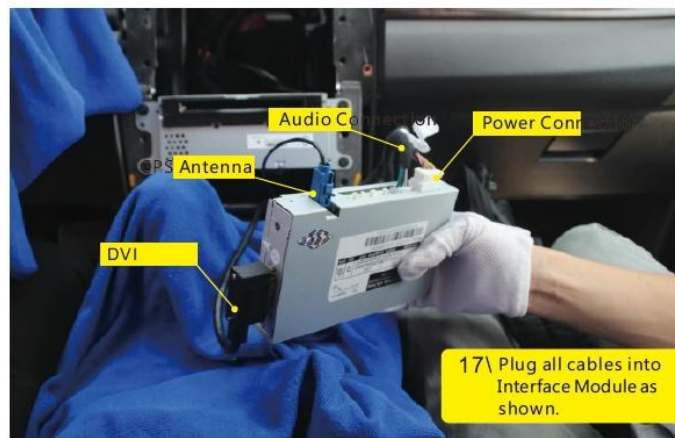
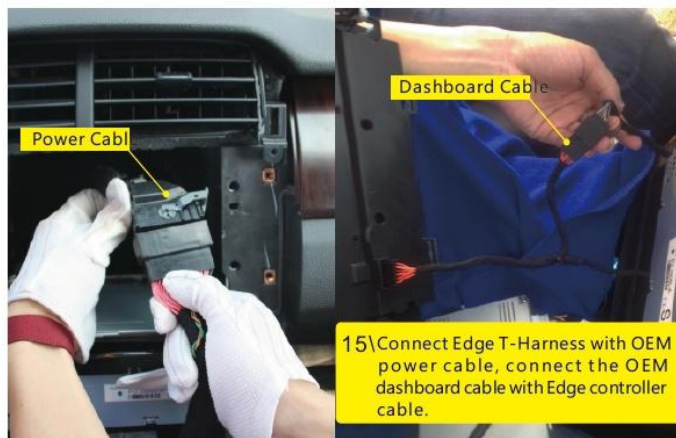
1. Some necessary tools indeed: plastic knives, spanner, Philip's & slot type screwdriver, large towels, gloves, shoe covers, plastic anti-static carpet, clean cloth, etc.
2. Wiring should not interfere OEM wiring, prevent the cable be broken or cut.
3. Navigation installed, should thoroughly inspect wiring.
4. Search for car audio power fuses, usually used as a blue 10 amp.
5. Handbrake test line must be connected to the ground side of the handbrake switch.
6. Looking for a suitable place to install the rear view camera next to the license plate.
7. Radio antenna and GPS antenna should be separated from ECU, prevent signal be interfered.
8. The placement of the first multi-disc CD player should confirm the strength of the surface mounted CD player, CD player fixed to avoid or quit suddenly stopped working.
9. If there are steering wheel control interface or OEM Can-Bus interface in the car, connect the output of the VTR control line to ground wire.
10. Avoid SD card be removed without permission, don't write or read data in it.

Notice:

Please read it, the warranty certificate and important product information carefully.

Wiring diagram:





CI-NAVUPSYNC

Installation Instructions